

# Film and TV Production in East Sussex

A growing sector

› LOCATE  
EAST SUSSEX





# East Sussex provides a valuable opportunity to the Film & TV Sector

›LOCATE  
EAST SUSSEX





“

“With so much investment in the local creative industries, there is huge scope for more film and TV production companies to flourish in East Sussex. Ten66TV are one such example already making the most of Hastings talent...” There are a significant number of other businesses and a thriving network of freelancers in media, post-production, TV and film who, like Ten66TV, have strong ties to Channel 4 and recognise the vibrancy and impact further investment could have to the area.”

Rukhsana Mosam, Executive Producer

✕ in f

## Contents

- 1 - Introduction to East Sussex
- 2 - Why East Sussex is the perfect choice
- 3 - Developing New Talent
- 4 - In Good Company
- 5 - Case Study - Curve Pusher
- 6 - Supporting the Arts
- 7 - It's all here
- 8 - Hastings to Hackney



# Introduction to East Sussex

What makes East Sussex special?

› LOCATE  
EAST SUSSEX





Edgy and creative, East Sussex has a long history of mavericks, innovators, and entrepreneurs. Indeed, after moving to Hastings in 1923, John Logie Baird built what would become the world's first working television set.



When busy minds are set beside the sea or in the glorious countryside, the quality of air, light and the most sunshine hours in Britain ensure a balanced and stimulating lifestyle. It's no wonder that such an array of creatives and business people have been drawn to East Sussex, making the most of the cheaper property, easy commute, and close proximity to London, Brighton, and Europe, they get to enjoy the best of both worlds.

Committed investment into cultural regeneration, educational programmes, and the creative industries is boosting the local population. Especially for the younger generation, doors and opportunities are slowly opening. This ready-made talent pool is recognised by the local authorities ensuring that the skills and talent pipeline is abundant into the future via established programmes.



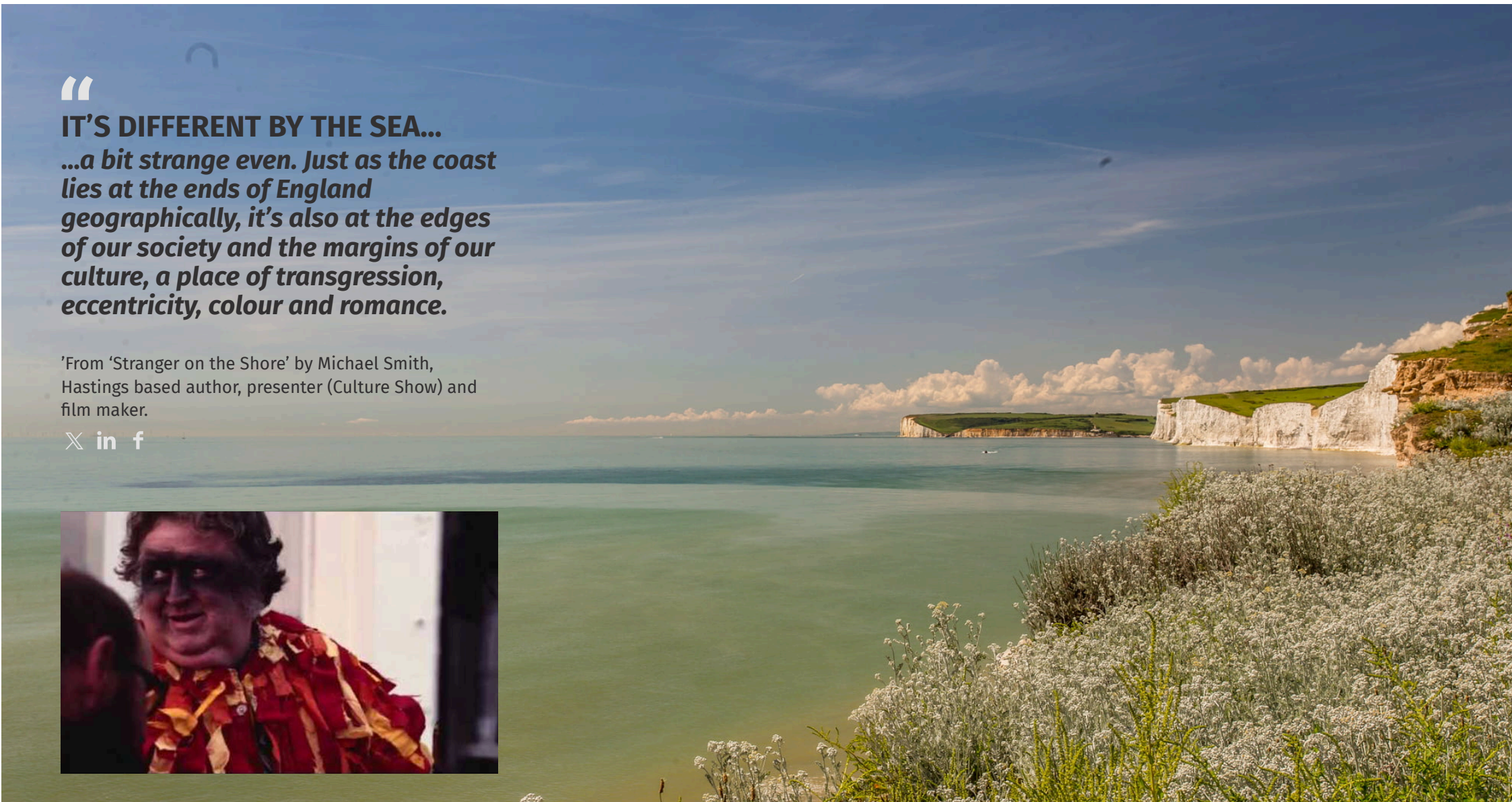
“

## IT'S DIFFERENT BY THE SEA...

*...a bit strange even. Just as the coast lies at the ends of England geographically, it's also at the edges of our society and the margins of our culture, a place of transgression, eccentricity, colour and romance.*

'From 'Stranger on the Shore' by Michael Smith, Hastings based author, presenter (Culture Show) and film maker.

✕ in f





# Why East Sussex is the perfect choice

Offering everything you could need for  
success

›LOCATE  
EAST SUSSEX





## Unbeatable lifestyle

The breathtakingly varied architecture as well as a mixture between seaside and countryside settings will attract and excite staff. With stunning parkland, cliffside walks, bustling towns, art galleries, theatres, bars and restaurants, all providing a stimulating environment to live, work and create great content.

Property prices 51% Cheaper than London

## Low operating & living costs

Cheaper commercial and residential property relative to other towns and cities in the UK, with larger home and office spaces and room for breathing, both literally and symbolically. In March 2021 the average price for property in East Sussex was 51% cheaper than that in London. Rental costs are also considerably cheaper, with average monthly rental prices in East Sussex being 40% less than the equivalent property in London.





## **Ultrafast broadband connectivity**

Our technical infrastructure can provide multiple 1Gb/sec (and 10Gb/s services) that are diversely fed and hence fully resilient. This will ensure excellent communication between hubs, partners and service providers.



## **Talent pipeline & academic links**

Our links to progressive educational partners ensure a ready supply of relevant talent. East Sussex College Group, the University of Brighton, and University of Sussex, equip students with the skills and experience for a career in TV and media industry. We also work

closely with other educational faculties including University College London (UCL) to forge opportunities in the region.



**“Over the last decade, Hastings and Bexhill has become one of the most vibrant creative communities in the country. We have great venues, galleries, education facilities and studios used by a diverse community of artists, musicians, writers, journalists and students. Where better to locate than in a pioneering place where TV has its roots.”**

Eddie Izzard



## **Vibrant creative networks**

A well-connected and thriving media talent pool operating across digital, TV & film production, supported by a strong creative and digital services sector covering design, architecture, advertising, PR and a flourishing music production scene giving East Sussex a creative energy ready for collaborations.

## **State-of-the-art facilities**

Immediate, accessible high-quality flexible workspace available throughout the county, equipped with state- of-the-art facilities.





## Easy access to London, UK & Europe

Fast, frequent, reliable transport options. High-speed proximity to Europe via Eurostar and Gatwick. Easy commute to London and Brighton means travel between hubs in the rest of UK is achievable. Newhaven port provides cross channel connections to the continent for both private passengers and commercial vehicles.

## Beautiful locations and stunning scenery

East Sussex is exceptional, offering a blend of rural, coastal and countryside across the county. It offers an unbeatable work/life balance, surrounded by a vibrant cultural scene and nature giving you both inspiration and breathing space. Here you can escape life's stresses and make work fit around your lifestyle and commitments or balance family and your career. Vibrant towns, quaint villages, rolling hills, chalky white cliffs and beautiful beaches all make up a county made to stimulate a creative culture.



Road	London to Hastings	2Hrs
Road	London to Eastbourne	2Hrs
Road	Eastbourne to Heathrow	1Hr 40
Road	London to Crowborough	1Hr 25
Road	London to Lewes	1Hr 45
Rail	London Victoria to Eastbourne	1Hr 25
Rail	London Bridge to Hastings	1Hr 25
Rail	Eastbourne to Gatwick	55Mins
Rail	Hastings to Ashford	45Mins

**Open full table in browser:**

<https://locateeastsussex.turtl.co/story/film-and-television-production-in-east-sussex/page/4/3>



## An exciting space to grow

Substantial investment plans are in progress throughout the county, with cultural regeneration projects in Hastings, Newhaven, Eastbourne and Hailsham to mention just a few.



Interactive poll not supported

[View online version](#)

**Over £200 Million has been invested into improving East Sussex**





# Developing New Talent

Courses and educational opportunities in creative sector

›LOCATE  
EAST SUSSEX





T

here is a range of institutions throughout East Sussex that are collectively responsible for the setting of careers in digital, TV and media industries giving you access to an incredible pipeline of the freshest talent. The academic staff of Universities and Schools such as East Sussex College, DV8 Sussex, University of Brighton, and University of Sussex make a vibrant contribution to the digital and creative industries both locally and on national and international levels, delivering a broad range of programmes across all levels: A-levels, Certificates and Diplomas, HND's and Degrees, validated by the University of Brighton.

There is also a high level of specialist opportunities through Brighton's Film and Screen School and Brighton Film Academy that support our young talent into prosperous careers in the sector.

The programmes offer a high calibre of foundation training with a lively and dynamic experimental approach to the teaching of these creative subjects.

Over 700 young people graduating a year from specialist creative, media, music and sound courses from ESCG







## East Sussex College

- Music Production
- Digital Media Design
- Digital Video
- Performing Arts Academy
- Music Academy.

East Sussex College offers university level degrees from campuses in Hastings, Lewes and Eastbourne. Offering excellent facilities and practical approach to learning, the teaching staff are well qualified, many with industry experience to guide progression and highlight career opportunities.







## DV8 Sussex


- **Level 2/3: - Games Development**
- **Music Production**
- **Media Production.**

Dv8 Sussex is a specialist college offering young people aged 16-24 personalised, industry-led training in the most vibrant & exciting creative sectors. Through practical project based learning our students gain real life experience to develop skills in a supportive and ambitious environment, where there are continual opportunities to work and think differently.



**WELCOME TO  
DV8 SUSSEX**





“The University is committed to co-creating long-term initiatives which support and transform local communities. We are passionate about making higher education accessible to more young people from all backgrounds, working with local authorities and industry partners to make that a reality.”

Professor Adam Tickell  
Vice-Chancellor of the University of Sussex

✕ in f



## University of Sussex

- *Filmmaking and Media Production*
- *Computer Science and Artificial Intelligence*
- *Digital Media*
- *Drama and Theatre, Music*

The University of Sussex is a leading research-intensive university near Brighton. Sussex was the first of the new wave of UK universities founded in the 1960s, It has over 14,000 students and more than 2,000 staff members.





# University of Brighton

## University of Brighton

- **Film**
- **Media Studies**
- **Digital Music and Sound Arts**
- **Music Production**
- **Media Production.**

The University of Brighton is a complex and diverse institution based in two locations across the south coast of England, Brighton and Eastbourne. Offering a variety of courses, taught by experienced tutors, the universities ethos is based on 4 core values: inclusivity, sustainability, creativity and partnership.







Bexhill 6th Form College

## Bexhill College

- ***Media (Digital) Technical Diploma***
- ***Media (creative practice) extended diploma***
- ***Music and Music Technology Industry Skills***
- ***Pearson BTEC Level 5 Higher National Diploma in Creative Media Production (Television).***

Bexhill College is a Sixth Form College with a long history of excellent post-16 education. In addition to A Levels, Bexhill 6th Form College also offers an exciting range of Level 3 and Level 2 vocational courses as well as Higher Education Level 4 provision.





# SCREEN AND FILM SCHOOL

## Screen and Film School

- **BA (Hons) Filmmaking**
- **BA (Hons) Film Business & Production**
- **BA (Hons) Hair and Make-up for Screen & Film**
- **BA (Hons) Production Design for Screen & Film**
- **MA Screen & Film Production**

With state-of-the-art facilities, dedicated industry lecturers and central locations in the heart of three filmmakers' cities; Birmingham, Brighton and Manchester, Screen and Film School's mission is to deliver practical courses and train the next generation of filmmakers wishing to enter the film industry.







## **The Brighton Academy**

- **BA (Hons) Musical Theatre**
- **BA (Hons) Performing Arts**
- **BA (Hons) Dance for Commercial Performance**
- **BA (Hons) Ballet**
- **TBA Professional Course**

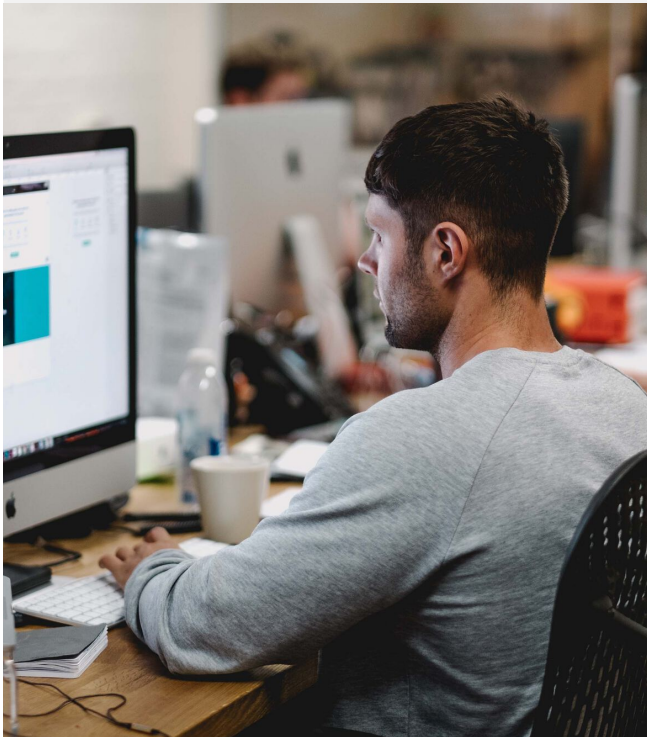
The Brighton Academy opened its doors to its first class of Full-Time Performing Arts students in September 2011. With four successful West End performers leading the way. Its courses are aimed at presenting the industry with individuals who are not only talented and professionally trained, but also well-equipped, both physically and mentally, to face the inevitable challenges they'll encounter as they break into the business.





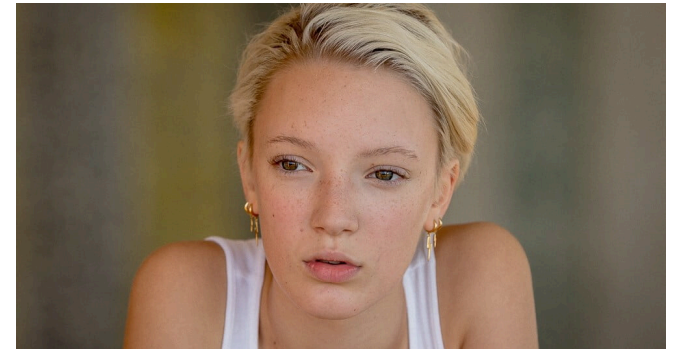
## Art Department

The Art Department is a management and booking service with over 25 years experience. They represent Production Designers, Supervising Art Directors, Art Directors, Set Decorators, Production Buyers and Stylists, Draughtsmen, Propmasters working in the film and television industry. Business Owner Alex is Hastings based, providing excellent connections between London and East Sussex.



Interactive poll not supported

[View online version](#)



### Rising Star - Raffiella Chapman

Raffi, 14, is a young actor from Hastings who won her first movie role when she was 5 years old as Lucy Hawking in Working Title's *The Theory of Everything* alongside Eddie Redmayne and Felicity Jones directed by James Marsh. Other roles include Claire Densmore in Tim Burton's *Miss Peregrine's Home for Peculiar Children*, BBC Film's *Homebound*, and German indie movie *The Have-nots*. Raffiella was the alien star of this year's John Lewis Christmas advert and recently filmed her breakthrough lead role of Vesper in *Vesper Seeds* directed by Kristina Buozyte and Bruno Samper, starring alongside Eddie Marsan.



# In Good Company

There are many notables names in the sector already making East Sussex their home.

›LOCATE  
EAST SUSSEX



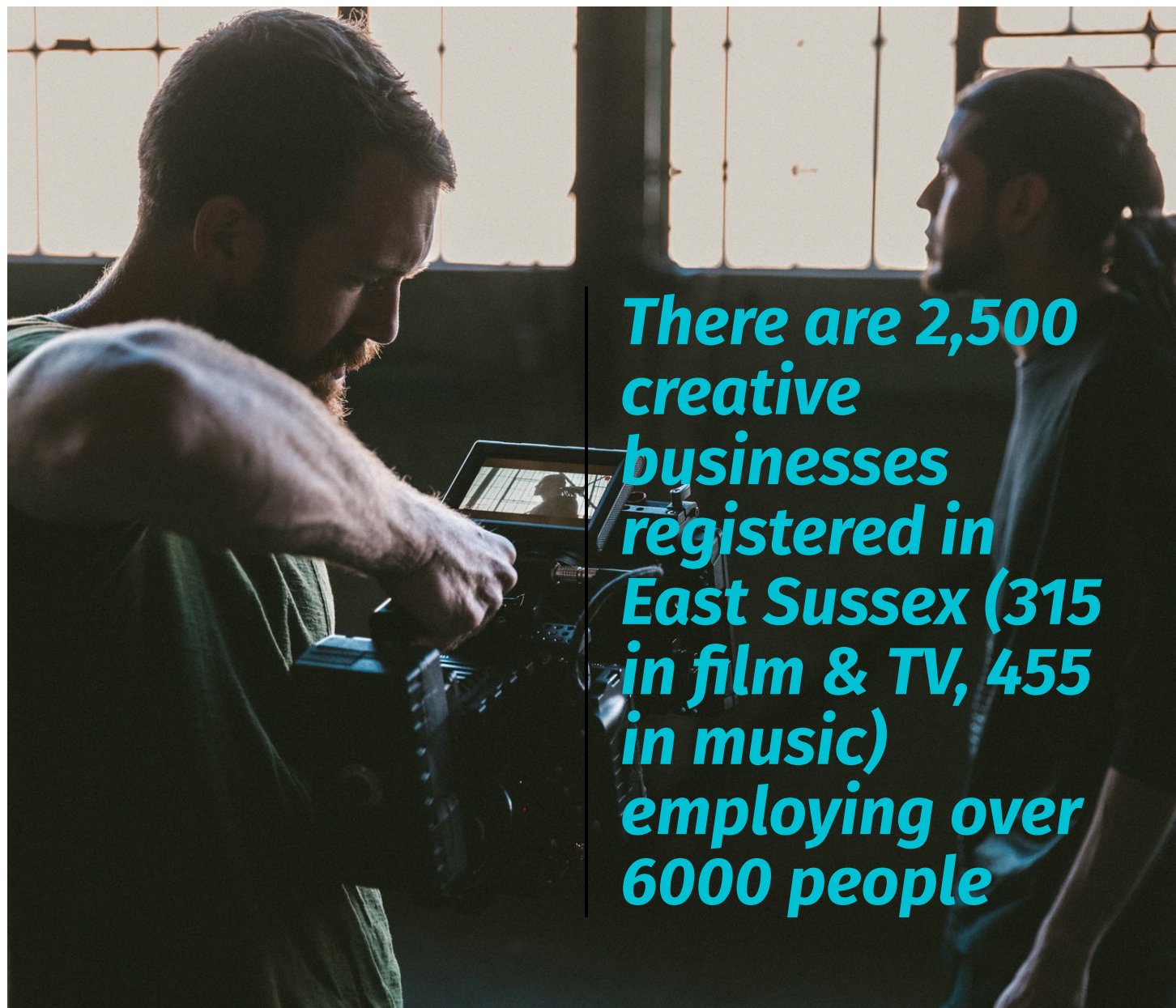


**G**rowth across industry sectors of creative, digital, media and tech is mirrored by the positioning of the county as a cultural centre with a full calendar of events, a dynamic café culture, a buzzing evening economy and exciting flagship venues such as Charlestown, Glyndebourne, Hastings Contemporary Gallery, Towner Gallery, and the iconic De La Warr Pavilion in Bexhill, stimulating new cultural economic activity.

**"I've lived in Hastings for fifteen years. I'm currently developing two television projects set here and I'm desperate to get one up and running. I love the landscapes, the architecture, the energy of the town and the people who live and work here. It's an incredibly inspiring and creative place brimming with talent."**

Emilia di Girolamo, Writer, Showrunner, Executive Producer.

**f in** 



***There are 2,500 creative businesses registered in East Sussex (315 in film & TV, 455 in music) employing over 6000 people***



Below is a small selection of the exciting businesses that have made East Sussex their home.



#### **Ten 66 Productions, Hastings**

Making popular film and television that educates and entertains the world. Ten66 Television is an independent, Female, BAME led TV production company based in Hastings, East Sussex. Factual Entertainment formats are its speciality and they are committed to seeking out and growing voices on and off-screen that need to be heard. Have worked with: **Channel 5 (Nick Knowles Home Improvements), BBC (Me And My Dog), All4 (Extraordinary Me).**



#### **Scissorhands Productions, Hastings**

Scissorhands productions make compelling, high-quality films for the communications, corporate and charity sectors. They focus on the communications and promotional challenges faced by their clients, and use their understanding of narrative along with their skills at creating outstanding visual media, to deliver your message in a way that informs, inspires and entertains. Have worked with: **Nike, HSBC, ITN, Jaguar.**



#### **Mediabite Group, Eastbourne**

The film division at creative media agency Mediabite Group has developed a number of powerful solutions based around xR filmmaking for TV, broadcast, live-streaming and hybrid events alongside more traditional motion picture productions. Mediabite Group's adoption of these technologies maintains a company skillset at the forefront of global film production techniques and provides our clients with limitless creative opportunities.

# SaGuarda studios

**SaGuarda Studios**, Forest Row

Storytellers who produce high-quality tailor-made films of any size with a focus on creativity, visual flair and added value. SaGuarda Studios was awarded the Best Bespoke Film Production Company in Sussex 2020 by UK Enterprise Awards. Have worked with: United Nations, Sketch house, RAWnCHI chocolate, Chamber music company. Owned by Diego Barraza, (El Salvador, 1973) Sussex based Cinematographer and Director. Full member of Directors UK. Winner of 2018 Best Short Film Audience Award at the Tallahassee Film Festival. In 2000, he won the Mole & Richardson's Hollywood "Millennium Lighting Contest". His feature documentaries, short films, music promos and commercial work have aired internationally. Diego also teaches film-making to Sussex youth.



# VAMONOS

**Vamonos Creative**, Eastbourne

Develop and produce their own shows for traditional broadcasters and OTT video platforms and bring those storytelling and production skills to their commercial client work. Offering creative developments, direction, shooting and post-production services. Have worked with: Disney, Nickelodeon, MTV, Heinz.





# Strong Independent Creative Community



## **EMILIA DI GIROLAMO**

Emilia di Girolamo is currently creator, lead writer, executive producer and Showrunner of detective show *THREE PINES*. She wrote and executive produced true-crime drama *DECEIT* for C4, was showrunner of *THE TUNNEL* for SKY and *LAW & ORDER UK* for ITV/NBC, wrote *THE POISON TREE* for ITV, and was a series writer on *MEDICI* for NETFLIX.

## **CHRISTOPHER WHITE**

BAFTA Award Winning Composer who creates scores for feature films, television dramas and documentaries. His work has premiered in films at Sundance, Tribeca, SXSW, Dinard, CPH:DOC; as well as films and shows on Amazon, Netflix, BBC, and Channel 4. He is known for *Maya* (2020), *Thank You for the Rain* (2017) and *The Heart Machine* (2014)





### **SEYMOUR MILTON**

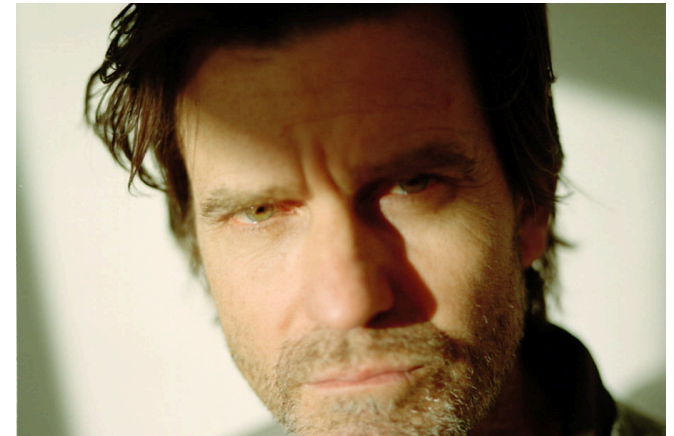
Composer For Film, Tv, Games And Dance  
Recent highlights include scoring the neo-noir feature film RATTLESNAKES, producing a punk-rock track for the GEARS OF WAR 5 promo plus a Best Score nomination at the King of Kings Festival for comedy short THE MASTER OF YORK.



### **RUKHSANA MOSAM**

Creative Director

Rukhsana Mosam has over 25 years' experience in the television industry working for all the major broadcasters. Rukhsana has delivered programmes for the BBC, ITV, C4 AND C5 as a Series Producer, Executive Producer, Head of Factual and Head of Development. Her credits span Features, Fact Ent and Documentary, producing everything from Wife Swap for Channel 4, to How to be a Property Developer for Channel 5.



### **TIM CRAGG**

Cinematographer

Tim has photographed 10 theatrical feature films, and numerous television documentaries. He has two feature documentaries ranked in the Top 50 highest earnings at the USA Box Office. He was awarded a BAFTA for cinematography and has been nominated for three BAFTA's and three EMMY's for cinematography. His works include; The Serengeti Rules, The Great Green Wall, and Fear City. He has lived in Hastings since 2008. He works mostly with a Hastings film crew and equipment from a camera facility in Hastings on film projects around the world.





**MICHAEL SMITH**

Author, Presenter (Culture Show) & Film Maker

**DAN MATTHEWS**

TV Producer

**REBECCA MARSHALL**

Film Maker, Co-Founder Director, Electric Palace Cinema

**DAVID CAFFREY**

'Director of Peaky Blinders and Line of Duty'.



**CHLOE WHITE**

Whalebone Films

Specialists in producing creative, engaging and high-quality content for online, tv, cinema and radio. Known for The Last Taboo (2019), The Climate and the cross (2019), and The Long Haul (2016)

**DAN & NEIL**

ZEROH DESIGN, ART DIRECTION/MOVING IMAGE

"It is impossible to ignore a burgeoning new generation of talent and migrating artists...happening right now."



**DEREK BROWN**

Production Design.

Has worked The Apprentice (2006-2007), Wildest Dreams (2009), The Face (2013).

**TRIX WORRELL**

Creator/Writer Of Sitcoms Desmond's & Porkpie



Interactive poll not supported

[View online version](#)



# Curve Pusher

Leaving London for Success in East Sussex

›LOCATE  
EAST SUSSEX



# CURVE PUSHER

After nearly two decades of mastering and cutting records in East London, Curve Pusher announce their relocation to the musically rich seaside town of Hastings and the bespoke rebuild of its music mastering, vinyl record cutting and recording facilities.



Founded by Lawrie Dunster in 1999, Curve Pusher has had a vibrant heritage in the electronic music community in London - mastering the music made by its musicians, cutting dubplates for its DJs and providing



recording facilities for its producers, they have been involved on every level. In their time in operation, they've covered ground as far ranging as spoken word, noise, metal and punk.

Hastings was chosen as the new home for Curve Pusher after Lawrie felt an instant

affinity to Hastings and its people after being forced out of his premises in Hackney due to the building being sold for redevelopment. The move has been a force for positivity enabling him to build a new bespoke studio complex from the ground up, overseeing every detail to achieve the highest possible specification for the mastering and cutting process.



During their move, Curve Pusher have received the full backing and support of Hastings Council and Locate East Sussex who supported the business with match-funded financial loans, grants, advice and connections. Hastings has provided a welcoming environment for creative businesses and is working to make their town a hub for a musically minded community of creatives.

**“While I’m sad to leave Hackney, the relocation to Hastings has offered me a once in a lifetime opportunity to build this suite of studios from scratch, from the cabling to the soundproofing and room acoustics I've been able to refine every detail and create this facility to the best possible specification.**

**"It's a new chapter for Curve Pusher, one which I hope will build on the work we have done in dance music and the international sector already and will allow us to work with the rich local community of musicians that our new home has in droves."** Lawrie Dunster.



**"It's a new chapter for Curve Pusher, one which I hope will build on the work we have done in dance music and the international sector already."**

Lawrie Dunster



# Supporting the Arts

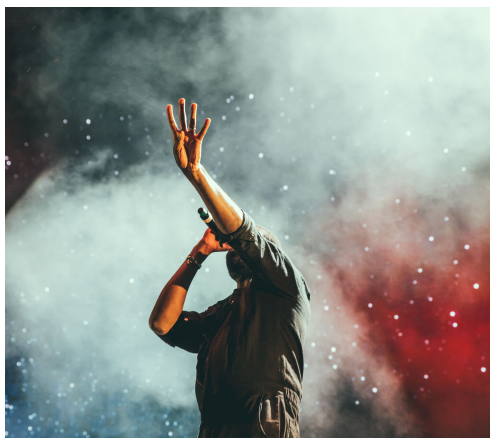
Organisations committed to supporting  
Creative Arts

› LOCATE  
EAST SUSSEX





**C**reative people choose to live here, and creative businesses thrive because they are inspired by the County and are supported wisely. Planning, investment, and marketing decisions at all levels enable the growth of creative businesses. Success breeds success and the cultural and creative sector is expanding.



There is already a plethora of creative communities and networks, joining together to collaborate, share ideas and further increase the visibility of East Sussex's expanding creative talent pool.



### Screen South

Screen South is a cultural development organisation with digital creativity at its heart. They are focused on promoting new ideas, engaging audiences, and delivering excellence and opportunity for all. Screen South offers a variety of programmes including 'New Creatives' a talent development scheme that offers commissioning opportunities for emerging artists.



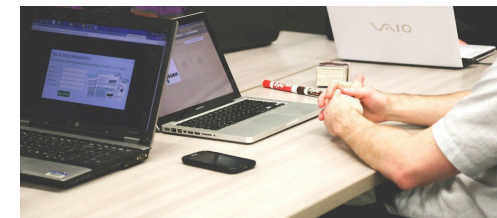
### South East Creative Economy Network

The South East Creative Economy Network (SECEN) works to accelerate growth in the digital, creative and cultural sector. It is a working partnership between local authorities, creative businesses and education bodies across the South East LEP area.

Overcoming barriers to growth – aligning the efforts of businesses, education providers, strategic organisations and local authorities.

### Workspace Development

SECEN is developing a work space strategy to ensure that fit for purpose workspace is available across the South East to enable



scaling up and fostering of creative enterprise zones based on existing creative hubs.

### Business Support and Development

A bespoke package of business support will be delivered locally within creative industry clusters, but will link into the SELEP Growth Hub network.

### Talent Accelerator

SECEN works with Creative and Cultural Skills (the National Academy for Skills and Training for the UK's Creative and Cultural industries) developing a work programme to support the talent pipeline for creative industries.

## WIRED SUSSEX

### Wired Sussex

Based in Brighton, we support the digital, media and technology sector across Sussex. Thousands of companies and freelancers come together to make up our regional network.



### Hastings Creatives

A place to connect creative practitioners working in Hastings, St Leonards and the surrounding area – Bexhill, Battle, Rye and the villages in between. Offering a directory and email list, you can discover all the local talent you might require.



### Chalk

Chalk is a network for those working in Digital. It was launched to highlight the strengths of the industry in Eastbourne, and the surrounding area, and to provide support to those working in, or looking to work in the creative sector, growing local talent and aiding recruitment.

**South East Creatives have helped more than 400 creative, cultural, and digital businesses.**

## SOUTH EAST CREATIVES

### South East Creatives

Over the past two years, they have helped more than 400 creative, cultural, and digital businesses to thrive, providing nearly £1 million in grant funding. Much of this funding has been allocated during the very difficult circumstance of the COVID pandemic. This funding has now come to an end, but we are hopeful for similar schemes in the future to support the growing creative and cultural sectors.







### **East Sussex Arts Partnership**

The East Sussex Arts Partnership has a small number of grants of up to £500 available. These grants are for arts projects which support the East Sussex Cultural Strategy priorities. They also offer funding advice surgeries and regular emails on business-to-business opportunities.



### **Arts & Cultural Development Match Funding Grant**

The Arts & Cultural Development Match Funding Grant is Hastings Borough Council's strategic fund to support applications from the creative sector to funding bodies that bring additional investment to the town. The Match Funding Grant is for funding applications to organisations that are based outside of the Borough of Hastings - so that it is bringing new funding into the borough. The Match Funding Grant can support applications to Arts Council England and National Lottery Funds as well as to trusts, foundations and other funding bodies who are not based in Hastings.



Interactive poll not supported

[View online version](#)

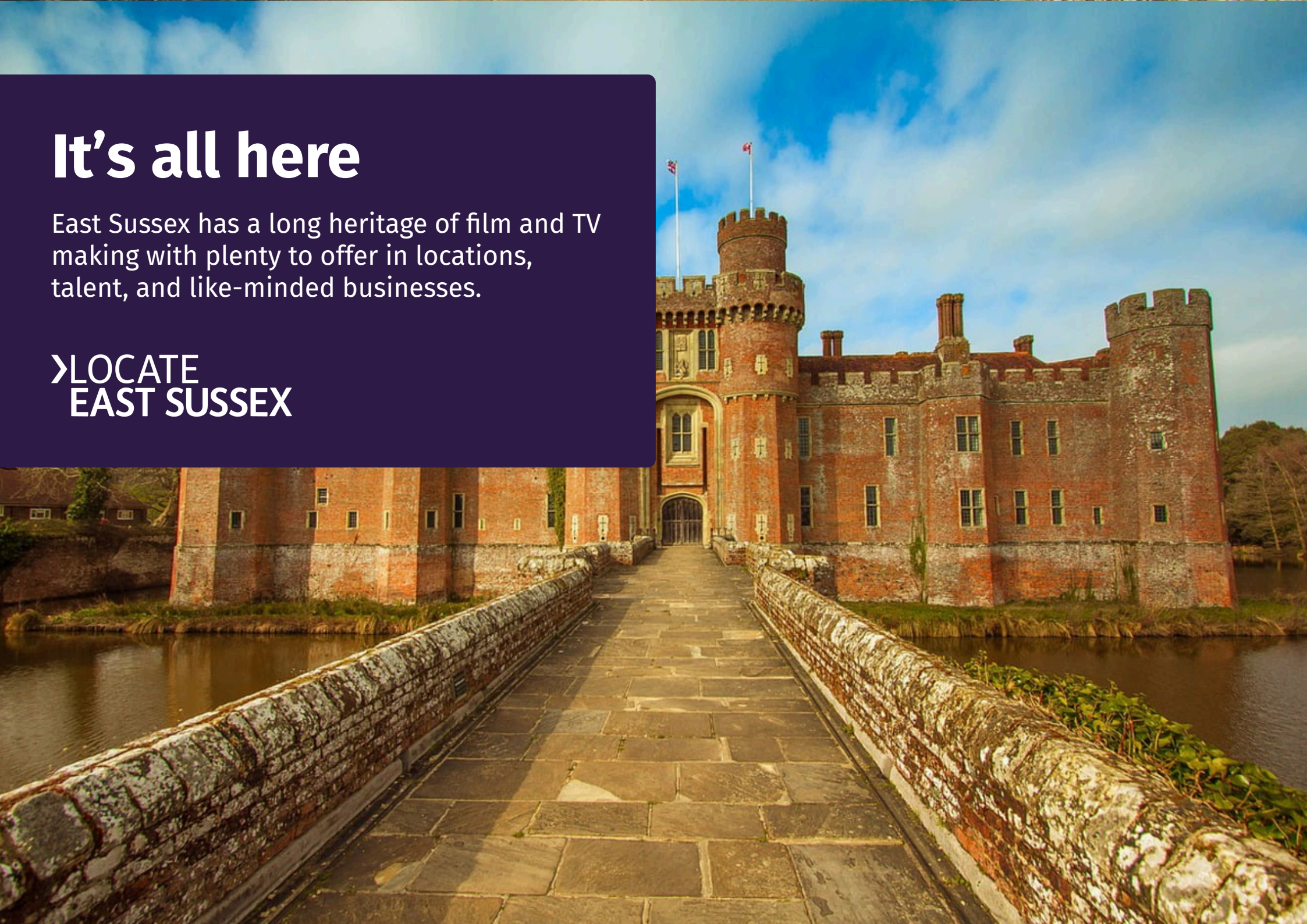




# It's all here

East Sussex has a long heritage of film and TV making with plenty to offer in locations, talent, and like-minded businesses.

› LOCATE  
EAST SUSSEX







The county's widening creative culture has led to community of businesses across the county and neighboring counties to all working collaboratively and seamlessly to support each other's successes. These easily accessible creative networks allow visiting productions to the area to utilise local talent, facilities and equipment making the South East an excellent choice for creative projects.

The county is made up of five districts, all offering their own unique character and features to enjoy All with excellent connectivity and transport links to the city and beyond.

**E**ast Sussex has a long heritage of film and TV making. The earliest is probably the invention of the television by Logie Baird in Hastings.

East Sussex offers an ideal location for those in the creative sector, with inspiring locations that can cover every brief from iconic beaches, historical Abbeys, stunning white cliffs, and acres of woodland. East Sussex can offer something for everyone and in a community of like-minded people.

Eastbourne

Hastings

Lewes

Rother

Wealden



SUSSEX  
FiLM  
OFFICE

The Sussex Film Office offers a simple, all-inclusive service for all production types and budgets.

SFO can help you with locations, crew, freelancers, and permits for your productions. They are very experienced and have relationships with all the necessary authorities to make location filming as smooth as possible. The beauty of the county is that you can reach it so easily from London and the major studios to allowing filmmakers the flexibility to return home on the same day, or if needed, stay in any of the affordable accommodation throughout the county.



1066  
Country

Whether you're making a fashion shoot, a large film, a low-budget feature, a short, a commercial or a major drama series, the 1066 film office can support you to get things rolling when filming in Camber Sands, Rye, Hastings and Rother. Their bureaucracy-free approach means they are able to help productions with notice periods as long as six months or as short as six hours.



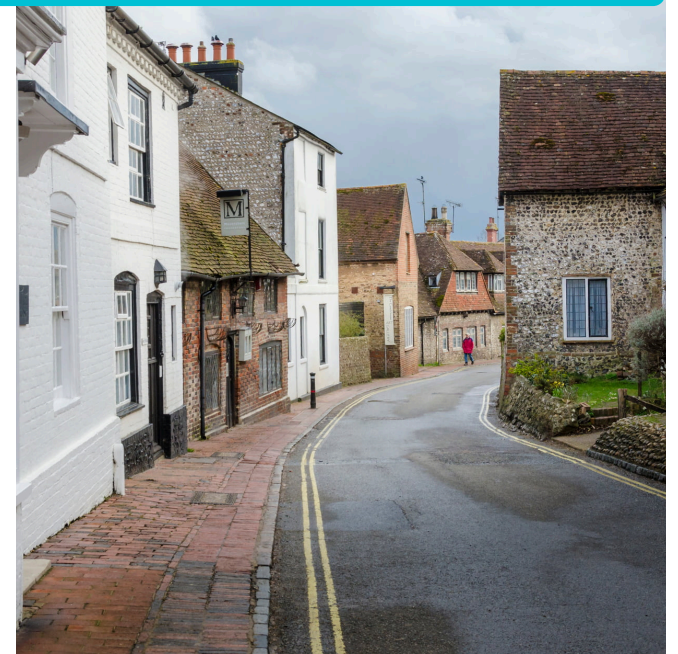
Interactive poll not supported

[View online version](#)





**A wide range of locations**

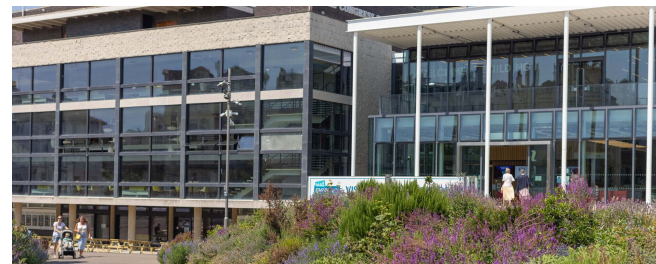
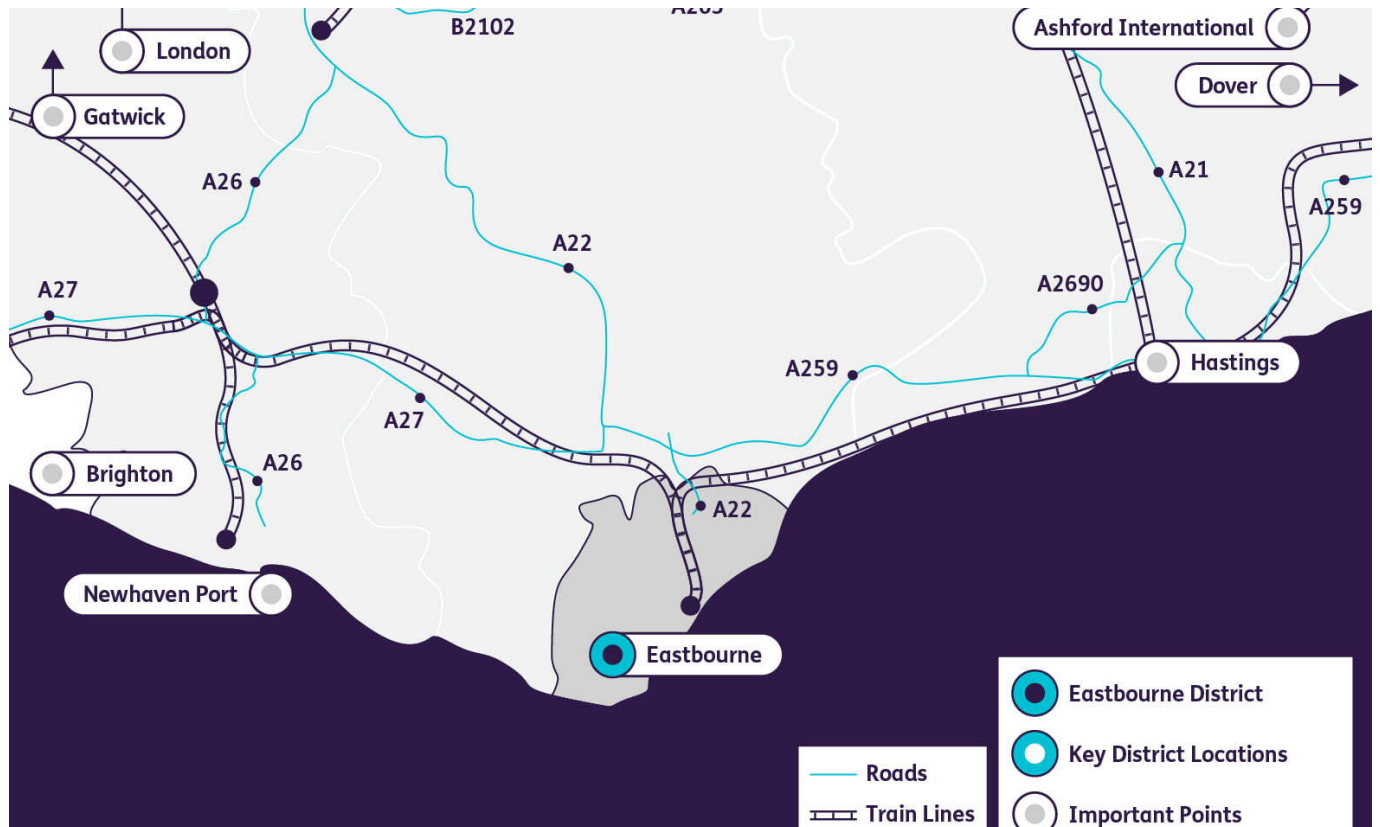




## EASTBOURNE IS:

Just 19 miles east of Brighton, Eastbourne is one of the fastest-growing commuter towns. Sitting immediately to the East of Beachy Head, the highest chalk sea cliff in Great Britain, Eastbourne has been quietly reinventing itself into an exciting creative hotspot with a reputation as a growing centre for digital technology.

Towner Gallery heads up a rejuvenated cultural quarter. This £54 million transformation of Devonshire Park Quarter puts Eastbourne on the map as a top cultural, sporting, and conference destination offering first-class facilities for both residents and visitors.



With four grade 2 listed theatres in the town, offering independent shows as well as touring productions, and the Bandstand providing an open-air music venue the town appeals to lovers of all of the arts equally.

Eastbourne is already home to 300 creative businesses (9% of total in the district), employing 900 people and with a variety of media-based educational courses available, there is a wealth of talent ready and waiting for the right opportunity.

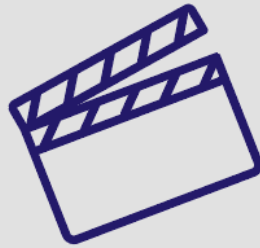


9% of Eastbourne's businesses are in the creative sector.

The seafront and the iconic cliff at Beachy Head have been used for many scenes in feature films and television shows, along with several notable hotels, the pier and the promenade. Eastbourne certainly isn't short of stunning coastal locations to help tell a story. The town centre has recently received £85 million investment including a brand new modern shopping centre 'The Beacon' making Eastbourne an even bigger draw for residents and visitors alike.

Eastbourne is well connected to major routes into London, Kent and Brighton and offers access to London via a direct train in 90 minutes. These close connections to London, Brighton, Dover, Newhaven, the Channel Tunnel and Gatwick Airport make it a great location for the next generation of coastal cool.

#### FILM & TV



**HARRY POTTER  
(2004)**  
**CHILDREN OF MEN  
(2012)**  
**BRIGHTON (2021)**

#### POPULAR LOCATIONS



**BEACHY HEAD**  
**SEAFRONT**  
**EASTBOURNE TOWN**

#### FILM & TV

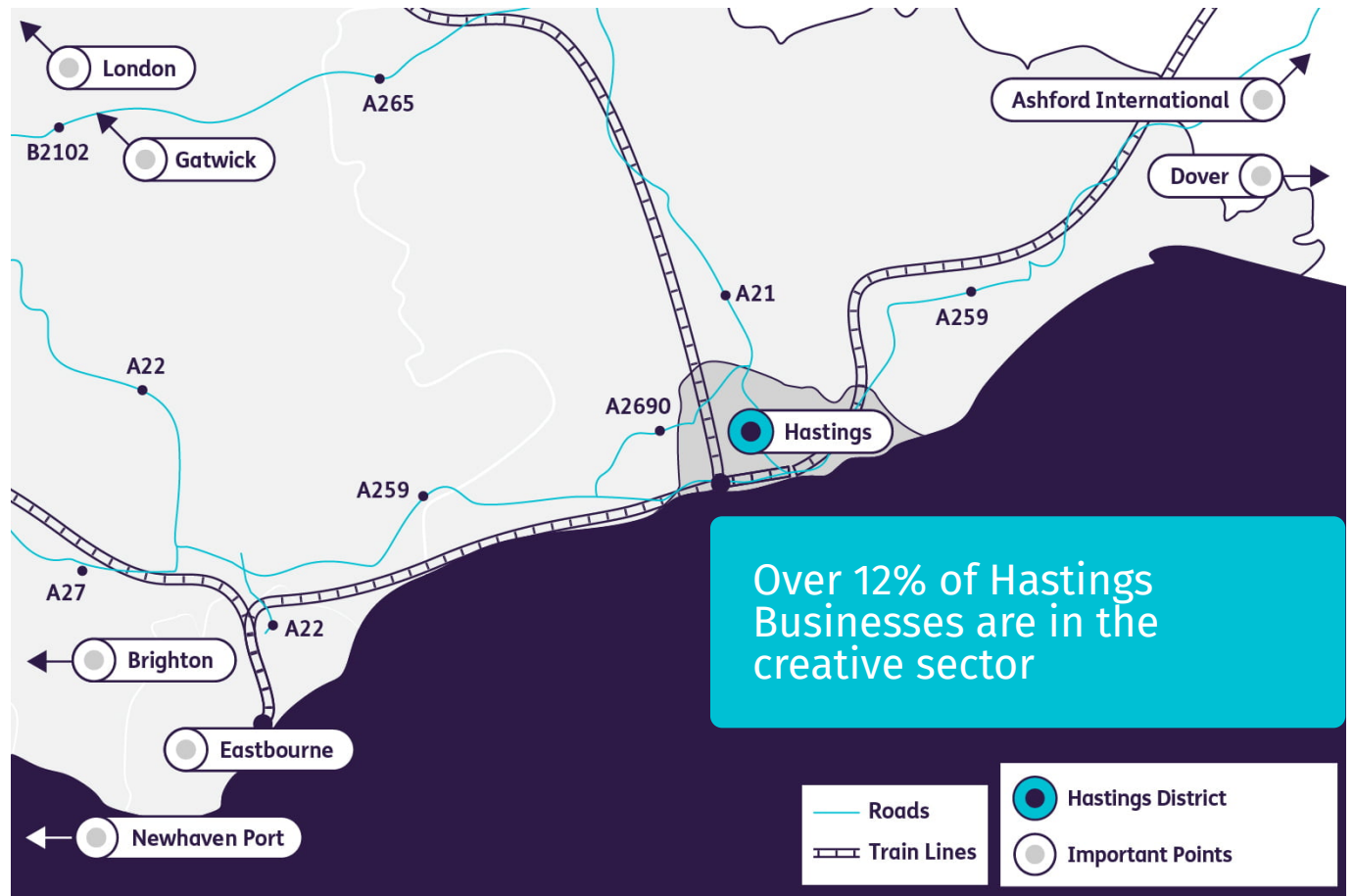


**FOYLE'S WAR**  
**MARPLE**  
**FLESH AND BLOOD**



## HASTINGS IS:

Hastings is located on the south east side of East Sussex. It has almost eight miles of coastline and is surrounded by the mainly rural district of Rother. Developed from a small fishing port to a substantial town, it is known worldwide for its rich history including the Norman Conquest in 1066.



Just 65 miles from Central London, or 90 minutes by direct train, Hastings is a quirky, fiercely independent, and a free-spirited place with a distinctive character. This pioneering

and energetic town has lots of assets to build on with a determined business and local community to help.



Its iconic cultural heritage has always been a source of local pride and passion, with a vibrant annual calendar of cultural, arts and heritage festivals. It is known for its events regionally and nationally, involving and attracting many people that live here and enticing people to visit. Hastings is a creative hotspot at the epicentre of England's Creative Coast stretching from Brighton to Margate. It punches way above its size creatively.



## Creative Centres

### Rock House

Rock House is an ambitious mixed-use project, home to living space, work space and a community hub. Their 'Ground Zero' coworking space attracts a community of creative entrepreneurs who work collaboratively in their shared goals.

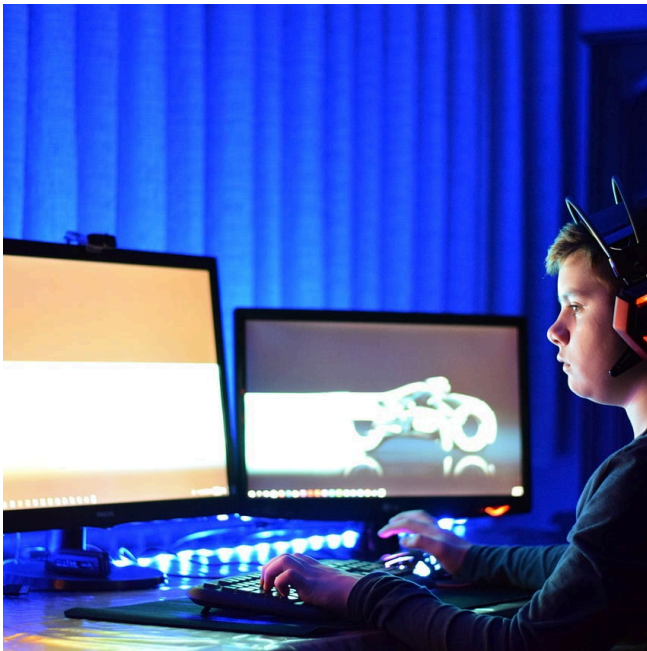


### Observer Building

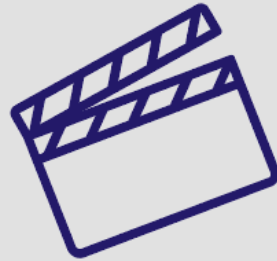
The Observer building is an ongoing project to turn a derelict building into a vibrant hub including 11 shops/workshops, 14 offices and co-working studios, 6 recording studios and a live room and a roof terrace and bar.



Hastings people are unstoppably creative, and this is a major attraction to living and working in the town. The creative sector now employs around 800 Hastings residents across approximately 345 organisations and accounts for 10.25% of businesses in Hastings which involves interactive, performing, visual and fine arts, gaming, digital, story-telling and more.



## FILM & TV



**GREY OWL (1999)**  
**BYZANTIUM (2012)**  
**ROADKILL (2020)**  
**BRIGHTON (2021)**

## POPULAR LOCATIONS



**HASTINGS BEACH**  
**BOTTLE ALLEY**  
**HASTINGS TOWN**  
**GOTHAM ALLEY**

## FILM & TV



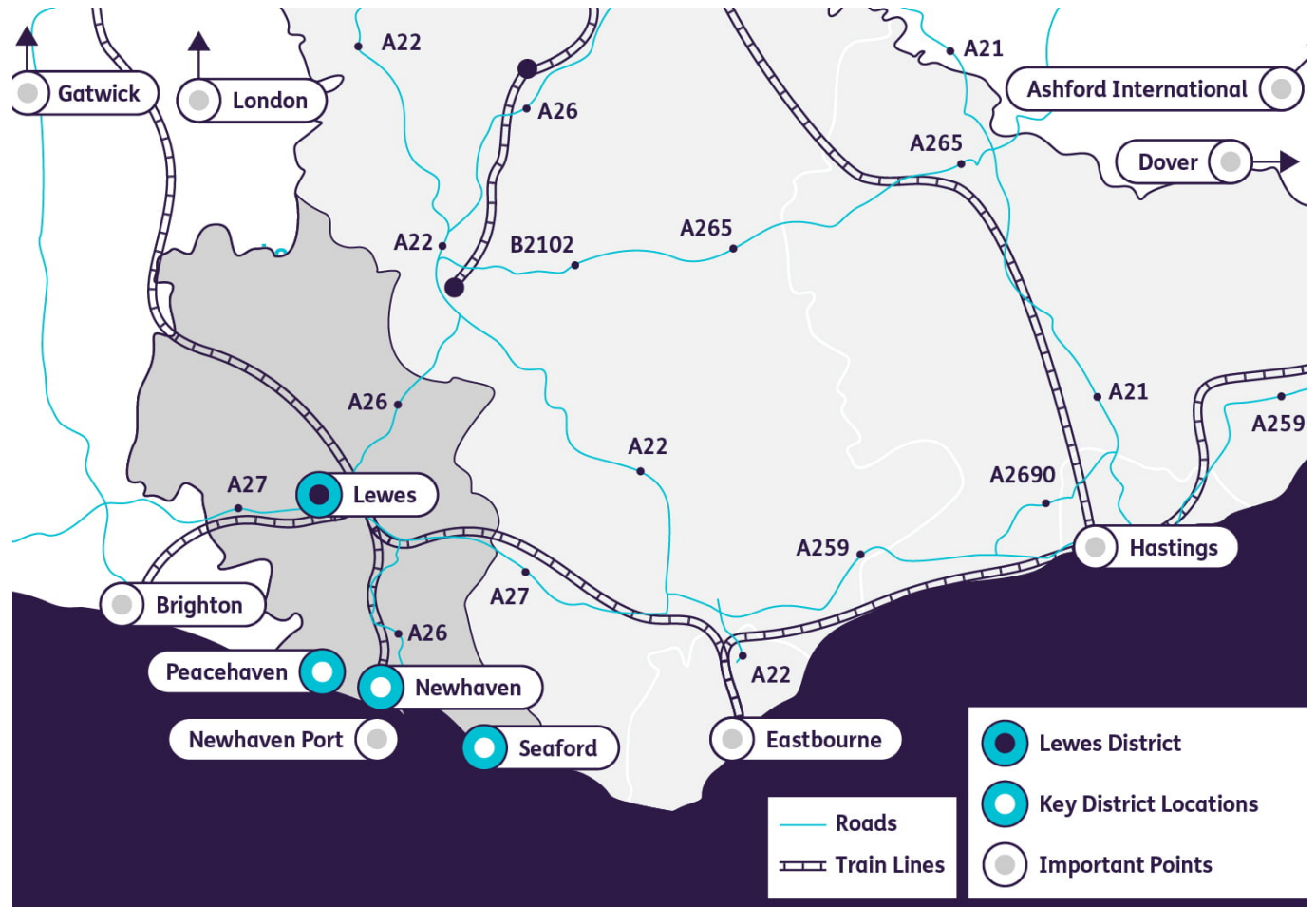
**FOYLE'S WAR**  
**CLOSE TO ME**  
**NATIONAL LOTTERY**





## LEWES IS...

Lewes District has a thriving economy with a rich heritage, strong community spirit, natural beauty and outstanding opportunities. The District includes varied economies - rural, coastal and urban and extends inland from the coast over the South Downs and into the Sussex Weald covering 292 square kilometres over half of which lies in the South Downs National Park.



Most of the District's 93,900 population live in the four main urban areas Seaford, Newhaven, Peacehaven and Lewes. London is just

60-minutes away by train and Brighton is just down the road by car or 15 minutes by train.



A haven for entrepreneurs and large as well as small-scale enterprises, the district has a high number of registered creative businesses in East Sussex (600), and it continues to grow, employing over 1750 people.

Lewes itself is a market town of small, specialist, independent retailers. Bookshops, boutiques and antique centres sit alongside individual craft workshops. The town is known for its radicalism and creativity, and is home to an international community of artists, designers and makers passionate about sustainable design and architecture.

#### FILM & TV



**FIRELIGHT (1997)**  
**EMMA (2020)**  
**HOPE GAP (2020)**  
**SUMMERLAND (2020)**

#### POPULAR LOCATIONS



**CUCKMERE VALLEY**  
**LEWES TOWN**  
**LEWES CASTLE**  
**FIRLE PLACE**  
**SEAFORD BEACH**

#### FILM & TV



**FOYLE'S WAR**  
**CLOSE TO ME**  
**NATIONAL LOTTERY**



**A district offering diverse arts, a cultural scene and thriving towns**





Located four miles (6 km) outside of Lewes is Glyndebourne opera house. Founded in 1934, the venue draws large audiences for its Summer Festival and has attracted a pool of creative talent and tradespeople to live in the area.



Lewes district is also home to Charleston, known as the country meeting place for the group of artists, writers and intellectuals known as the Bloomsbury Group. It presents a dynamic year-round programme of exhibitions, events, and festivals.

Charleston was used as the location for the BBC Two Mini Series 'Life in Squares' which detailed the lives of those in the Bloomsbury Group.



## Newhaven Enterprise Zone

Close by, the Newhaven Enterprise Zone has been recognised as a key growth hub for the South East and has great potential for businesses to succeed.

Newhaven offers substantial physical capacity for growth. Comprising eight sites, Newhaven Enterprise Zone covers approximately 79 hectares, offering space to house the region's expanding high-growth businesses including a large number of creative industries and innovative manufacturers.



Offering close proximity to Brighton and London, the Lewes District offers the best of both worlds with easy connectivity but the inspiration of the countryside.

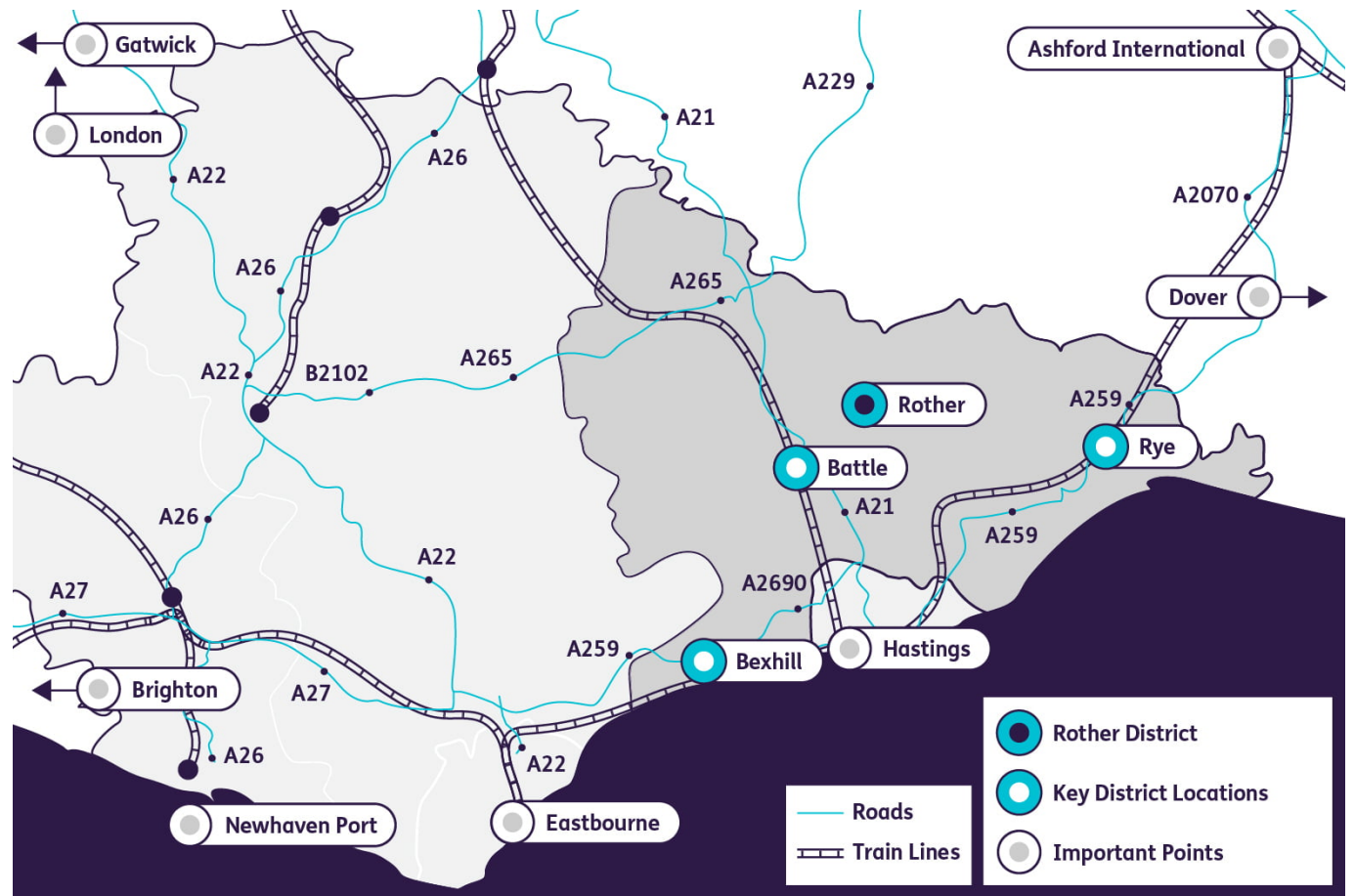




## ROTHER IS...

Rother is the most easterly district in East Sussex on the boundary of Kent. Covering 200 square miles, it is predominantly a rural district renowned for its medieval market towns with cobbled streets and beautiful stretches of sandy beach at Camber Sands.

Approximately half of Rother's population live in the coastal town of Bexhill-on-Sea, the other principal towns in the district being historic Battle, site of the Battle of Hastings, and the medieval Cinque Port of Rye. Rother is



also home to many smaller villages such as Bodiam, Robertsbridge (home to the award winning Blackshed Gallery), Burwash and Northiam.

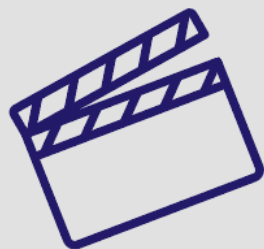


Like the whole of East Sussex, Rother has a wide and varied business base, with two-thirds of the district's businesses being situated within the High Weald Area of Outstanding Natural Beauty. Being close to nature and in a relaxed environment, Rother supports good business practice and a healthy work-life balance.

**Businesses in the creative sector have risen 15% in the last 11 years\*.**



#### FILM & TV



**CHILDREN OF MEN  
(2006)**

**THE MONUMENTS  
MEN (2014)**

**MY BOY JACK**

#### POPULAR LOCATIONS



**CAMBER SANDS  
BATTLE ABBEY  
BATEMANS  
BODIUM CASTLE  
BEXHILL BEACH**

#### FILM & TV



**MAPP & LUCIA  
THE CROWN**

With rapidly improving superfast broadband, over 95% in rural parts of the district, Rother is also home to a significant number of home workers who enjoy the benefits of the incredible location while avoiding the daily commute, meaning that for many, they can enjoy the reality of a rural base for their business. (\*2021 vs 2010 ESIF)





## Creative Centres

### DE LA WARR PAVILION

Bexhill on Sea is home to the De La Warr Pavilion, an iconic modernist pavilion which acts as a creative hotspot for contemporary culture, with a world class gallery and a venue particularly known for its music and comedy programme.



### RYE CREATIVE CENTRE

A centre of creative excellence, Rye Creative Centre is home to 37 artists, designer-makers and creative companies, with studios or archives permanently on site, known collectively as New Road Artists.



### FLIMWELL PARK

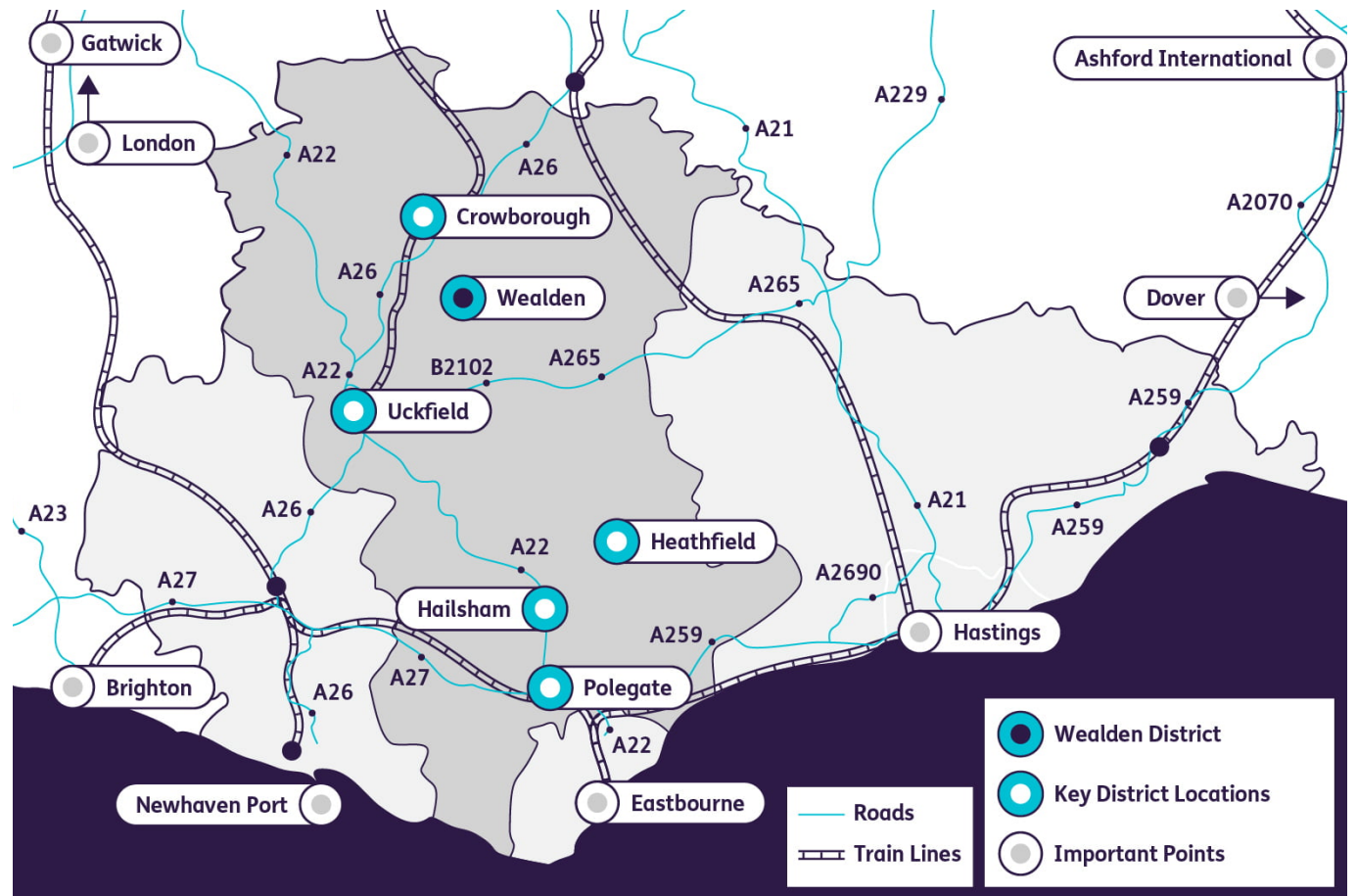
Flimwell Park provides unique office spaces and workshop facilities that have been designed to promote a healthy working environment. The spaces have appealed largely to the creative community, who benefit from the inspiration of being close to nature yet in a high quality workspace with hyper-fast internet connectivity.



## WEALDEN is...

One of the most rural areas in England. Nearly two-thirds is recognised as being of national landscape quality, boasting the High Weald Area of Outstanding Natural Beauty and the South Downs National Park.

Major landmarks include the Seven Sisters and Cuckmere Haven along the coast; the Long Man of Wilmington together with all of the paths over the South Downs National Park.



Breathtaking and varied landscapes, ancient woodland and stunning heathland weave their way through the area, and also offer some of the best places for dark starry skies. And being

one the sunniest regions in the British Isles, it has seen a boom in wine growing and now boasts over 20 vineyards across the beautiful rolling Sussex countryside.



**Over 570 different types of filming have been made in the area**

To the north of the district sits the Ashdown Forest, nearly two thirds of its 6500 acres (2500 hectares) are heathland, amounting to 2.5% of the UK's extent of this rare habitat. It is known the world over as the 'home' of Winnie-the-Pooh.



#### FILM & TV



**RAILWAY CHILDREN  
(2021)**  
**CHRISTOPHER ROBIN  
(2018)**  
**IN SEARCH OF FEAR**

#### POPULAR LOCATIONS



**ASHDOWN FOREST**  
**ALFRISTON**  
**SEVEN SISTERS**  
**BLUEBELL RAILWAY**

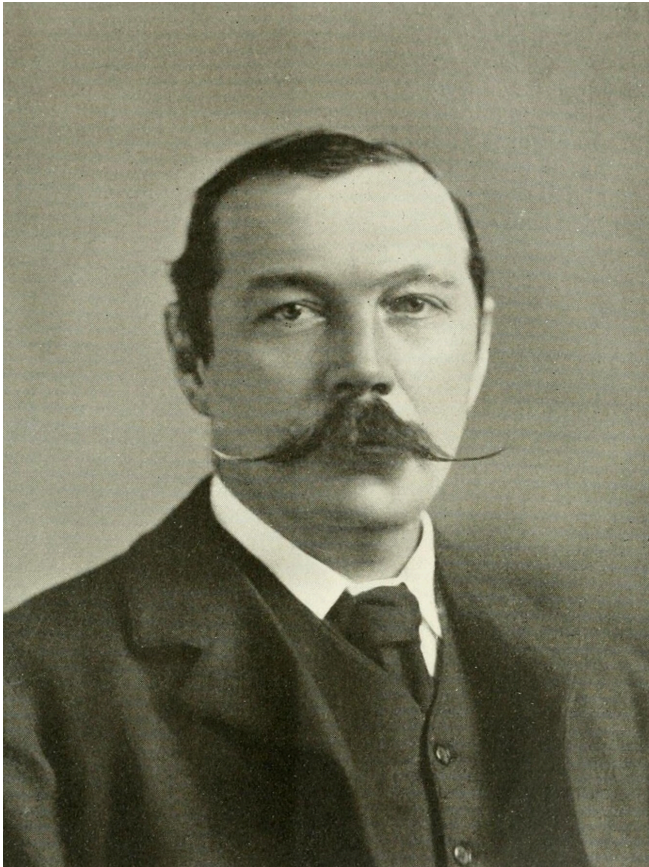
#### FILM & TV



**FLESH AND BLOOD**  
**MOST HAUNTED**  
**LIFE IN SQUARES**







Local craftsmen, artists and writers from past and in present have found inspiration here in Wealden, including; AA Milne, dramatist, novelist, journalist and children's writer, who made Ashdown Forest famous as the place



where the Winnie the Pooh stories were written. Sir Arthur Conan Doyle, novelist and writer of detective fiction and science fiction, is world famous for the Sherlock Holmes stories, and Lee Miller, the American fashion model, portraitist, surrealist and WWII war correspondent who lived with Roland Penrose, the artist at Farley Farm, where Picasso stayed.

Home to over 158,900 people and 8,600 businesses with half the population living in the five market towns of Crowborough, Hailsham, Heathfield, Polegate and Uckfield. Surrounded by beautiful countryside and

villages it is just thirty miles south of London, with direct rail links.

In 2021 885 businesses were operating within the creative sector in the region, an increase of 29% since 2010\* (ESIF) and employs 2250 people.





# Hastings to Hackney

A corridor of opportunity, providing all the elements for Film & Television Production.

›LOCATE  
EAST SUSSEX





**T**his corridor, encompassing East Sussex and areas of Kent, makes up the largest concentration of film and TV businesses outside of London. All within 2 hours of London, this makes an excellent choice for film projects and film and TV based businesses to be located.







## Maidstone Studios

Maidstone Studios sit ideally between the city and the coast, just an hour from London and close to the borders of East Sussex. The regional facility is set within 11.5-acre site and its team is hand-picked from the best in the industry producing a real family feel to how the studios are run.

With two studios 12,000sq ft and 6,000sq ft and a 3rd 1000sq ft studio being built and operational from 1st quarter of 2022.



### FACILITIES AND USP'S

- 26 Dressing Rooms
- 12 Seater Cinema & Sound Booth
- American Diner
- Bar & Restaurant
- Production Office Space
- 300 Car Park Spaces
- 24hr Onsite Security
- No Curfew Times For Set Deliveries
- Park & Ride – Audiences
- 6 x green rooms



# GUN HILL STUDIOS

## Gun Hill Studios, Hailsham

This commercial drive-in photographic / film studio is home to one of the largest infinity coves in Europe complete with two variable speed turntables capable of taking up to three tonnes each.

Gun Hill Studios has been the venue of choice for many industries being suitable for car photography, video production, stills, promos, castings and much, much more.

The 10m x 10m infinity cove is an immensely flexible space capable of morphing into whatever set or space is required; it is also an excellent screening theatre with plenty of room for an audience.



## Bridge Point Film Studios, Rye

South East England's versatile 5000 sq ft film studio & production location facility. Bridge Point Film Studios is an ideal base for film production in East Sussex. An hour by train from central London and close to the M20 in Kent.

- Onsite Parking
- Local Accommodation available
- Easy access from South East England
- Ideal for set builds up to 5250 sq ft and 30ft high
- Production areas inc offices, make up, green room, preparation and equipment storage
- Full lighting grid with winch adjustable bars and mixing desk installed.





## **Newtown Works Studios, Ashford (Target Launch Summer 2023)**

A new state of the art 80,000 Sq. Ft. TV and film studios, ancillary production space, mill store and media village. Once completed this will be the UK's largest new-build TV and film studio outside of London and will be ideally suited to TV dramas, series and feature films.





## **Falmer Court**

Just an hour from London, this stunning country estate is nestled in the beautiful Sussex South Downs, and comprises of an 18th Century Court House and a mid-13th Century Great Thatched Barn.

Reputed to be one of the largest barns in the British Isles – The Great Thatched Barn at Falmer Court has been lovingly restored making it a wonderfully adaptable venue to host photoshoots and filming.

### **Unique Studio Space**

Host your shoot or film set in a unique and fully equipped 1,302 sq. ft photographic and film studio, ideal for large shoots and filming.





## Facilities and Services



### Hire a Camera, Mayfield

Hirecamera is part of the Simplysnap Group and is one of the leading Photo & Video equipment hire companies in Europe. We offer an extensive range of digital cameras, lenses, video, lighting and studio products for hire and, we are a rarity in that we specialise in both Photo and Video equipment in equal measure.



### GPF Productions, Eastbourne

GPF Productions is a production company based in Eastbourne, East Sussex. They specialize in the hire of AV equipment and technicians for a wide variety of events.



## Scenery & Props



### Accord Stageworks, Heathfield

Accord Stageworks offer a complete turnkey solution for hire, build and installation of stage sets and costumes. The cost effective solution to your next production.



### Russell Beck Studio, Lewes

Russell Beck Studio based in Lewes has been making props for theatre and events for over 20 years. With access to the most experienced and skilled makers, sculptors and artists in the UK, work produced by the studio is of high quality.



### Hello Flamingo, Newhaven

Hello Flamingo are an awarding winning, creative design and manufacture company. Offering a full range of services including woodworking, spraying, metal work, prop making and sculpting, upholstery, flocking, acrylic, signage and print. We work on projects large and small, bespoke and sourced, from high street to luxury brands.



Interactive poll not supported

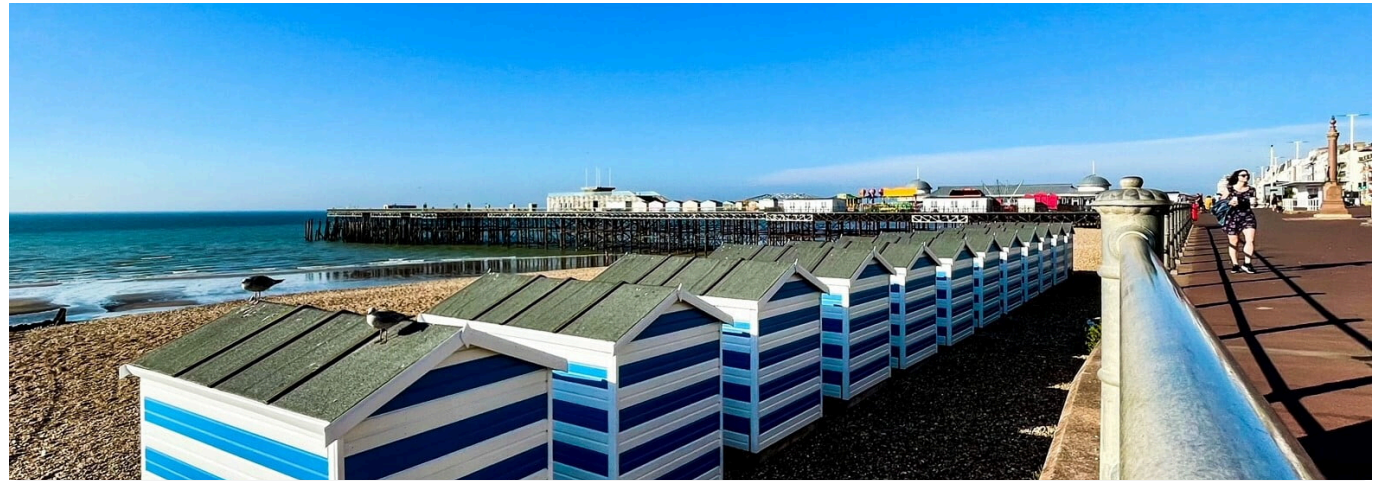
[View online version](#)



**Locate East Sussex is the  
official inward investment  
agency for East Sussex.**

We are funded by the county council together with the district and borough councils of East Sussex and until 2023, the European Union's Regional Development Fund, as part of a wider South East Invest project. Our experienced and dedicated team support any sized business already based in East Sussex and companies moving into the county to access funding to help grow our economy and create jobs in local communities.

The South East plays a pivotal role in the UK economy and is the gateway to mainland Europe. Locate East Sussex is key to ensuring that East Sussex remains an exceptional place to live, work and visit.



If you're looking to do business in East Sussex,

**Get In Touch**



## Image Credits

CH3-P1 - John\_Logie\_Baird\_-  
\_geograph.org.uk\_-\_537676 - Paul McIlroy John  
Logie Baird  
CH4-P1 - Image courtesy of De La Warr Pavilion  
CH4-P2 - Credit Tim Willcocks & Shootlab.co.uk  
CH5-T1 - nesa-by-makers-736784-unsplash  
CH5-P1 - annie-spratt-QckxruozjRg-unsplash  
CH5-P2- joel-muniz-394903-unsplash  
CH5-P7 - studio-republic-644339-unsplash  
CH6-P5-6 Portrait Photography by Tim  
Willcocks  
CH7 - Credit Tim Willcocks and Roland De  
Villiers  
CH8-P1 - austin-neill-247047-unsplash  
CH9-P4 - Credit - visit-eastbourne-1912  
CH9-P11- © Glyndebourne Productions Ltd.  
Photo GLYNDEBOURNE 27.8.2020 (HI-RES)  
3\_photographer James Bellowini  
© Glyndebourne Productions Ltd. Photo  
Gly\_Sam\_Stephenson\_\_0062  
© James Bellowini - CHARLESTON FESTIVAL OF  
THE GARDEN  
CH9-P15 - Image courtesy De La Warr Pavilion



- Flimwell Park credit to shootlab.co.uk  
CH9 -P17 - ian-wetherill-sWDuRg74UnY-  
unsplash  
- Portrait\_of\_Arthur\_Conan\_Doyle - Elliott &  
Fry, Public domain, via Wikimedia Commons  
CH10-P5 - luca-bravo-204056



Thank you for reading

# Film and Television in East Sussex

